

# 5-56 Victoria St S, The Blue Mountains, ON

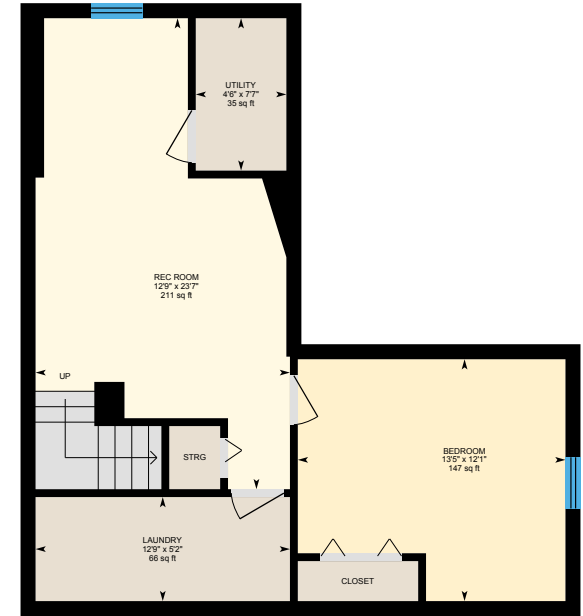
Main Building: Total Exterior Area Above Grade 1279 sq ft



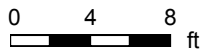
**1st Floor**  
Exterior Area 663 sq ft



**2nd Floor**  
Exterior Area 616 sq ft

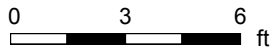
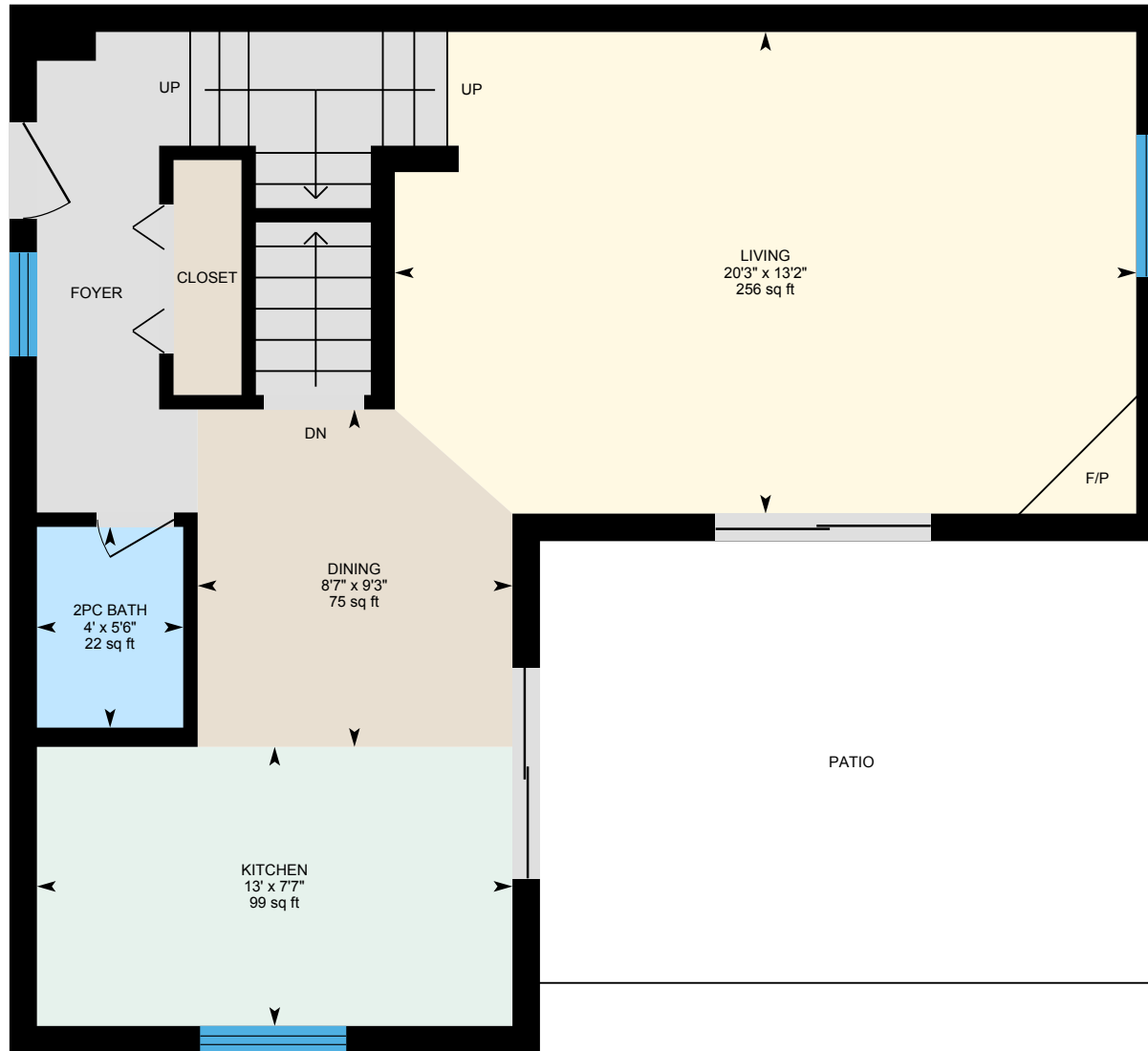


**lower level (Below Grade)**  
Exterior Area 617 sq ft



# 5-56 Victoria St S, The Blue Mountains, ON

1st Floor Total Exterior Area 663 sq ft  
Total Interior Area 575 sq ft

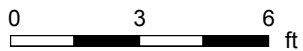


PREPARED: Aug, 2020



# 5-56 Victoria St S, The Blue Mountains, ON

2nd Floor Total Exterior Area 616 sq ft  
Total Interior Area 532 sq ft



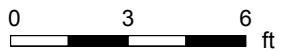
PREPARED: Aug, 2020



White regions are excluded from total floor area. All room dimensions and floor areas must be considered approximate and are subject to independent verification. For method of measurement please see <https://youriguide.com/measure/>.

# 5-56 Victoria St S, The Blue Mountains, ON

lower level Total Exterior Area 617 sq ft  
Total Interior Area 531 sq ft



PREPARED: Aug, 2020



White regions are excluded from total floor area. All room dimensions and floor areas must be considered approximate and are subject to independent verification. For method of measurement please see <https://youriguide.com/measure/>.

# 5-56 Victoria St S, The Blue Mountains, ON

## Property Details

### Room Measurements

Only major rooms are listed. Some listed rooms may be excluded from total interior floor area (e.g. garage). Room dimensions are largest length and width; parts of room may be smaller. Room area is not always equal to product of length and width.

#### Main Building

##### 1ST FLOOR

2pc Bath: 5'6" x 4' | 22 sq ft  
Dining: 9'3" x 8'7" | 75 sq ft  
Kitchen: 7'7" x 13' | 99 sq ft  
Living: 13'2" x 20'3" | 256 sq ft

##### 2ND FLOOR

2pc Ensuite: 4' x 4'10" | 19 sq ft  
4pc Bath: 13' x 5'7" | 62 sq ft  
Bedroom: 10'8" x 13'1" | 123 sq ft  
Master: 13' x 18'9" | 209 sq ft

##### LOWER LEVEL

Bedroom: 13'5" x 12'1" | 147 sq ft  
Laundry: 12'9" x 5'2" | 66 sq ft  
Rec Room: 12'9" x 23'7" | 211 sq ft  
Utility: 4'6" x 7'7" | 35 sq ft

### Floor Area Information

For explanation of floor area calculations and method of measurement please see <https://youriguide.com/measure/>. All displayed floor areas are rounded to nearest integer. Total area is computed before rounding and may not equal to sum of displayed floor areas.

#### Main Building

##### 1ST FLOOR

Interior Area: 575 sq ft  
Perimeter Wall Length: 117 ft  
Perimeter Wall Thickness: 9.0 in  
Exterior Area: 663 sq ft

##### 2ND FLOOR

Interior Area: 532 sq ft  
Perimeter Wall Length: 111 ft  
Perimeter Wall Thickness: 9.0 in  
Exterior Area: 616 sq ft

##### LOWER LEVEL (Below Grade)

Interior Area: 531 sq ft  
Perimeter Wall Length: 114 ft  
Perimeter Wall Thickness: 9.0 in  
Exterior Area: 617 sq ft

#### Total Above Grade Floor Area

Main Building Interior: 1108 sq ft  
**Main Building Exterior: 1279 sq ft**