

METRIC

DISTANCES AND COORDINATES SHOWN ON THIS PLAN ARE IN METRES, AND CAN BE CONVERTED TO FEET BY DIVIDING BY 0.3048.

Martin W. Knisley

ONTARIO LAND SURVEYOR

P.O. BOX 48

Duntroon, Ontario.

PHONE (705) 444-6203

PROJECT N°

93-244-17

SRD # 2004638

PLAN TYPE: 16R

C & G COORD. FILE = 244-17

SCREEN FILE = 244-17

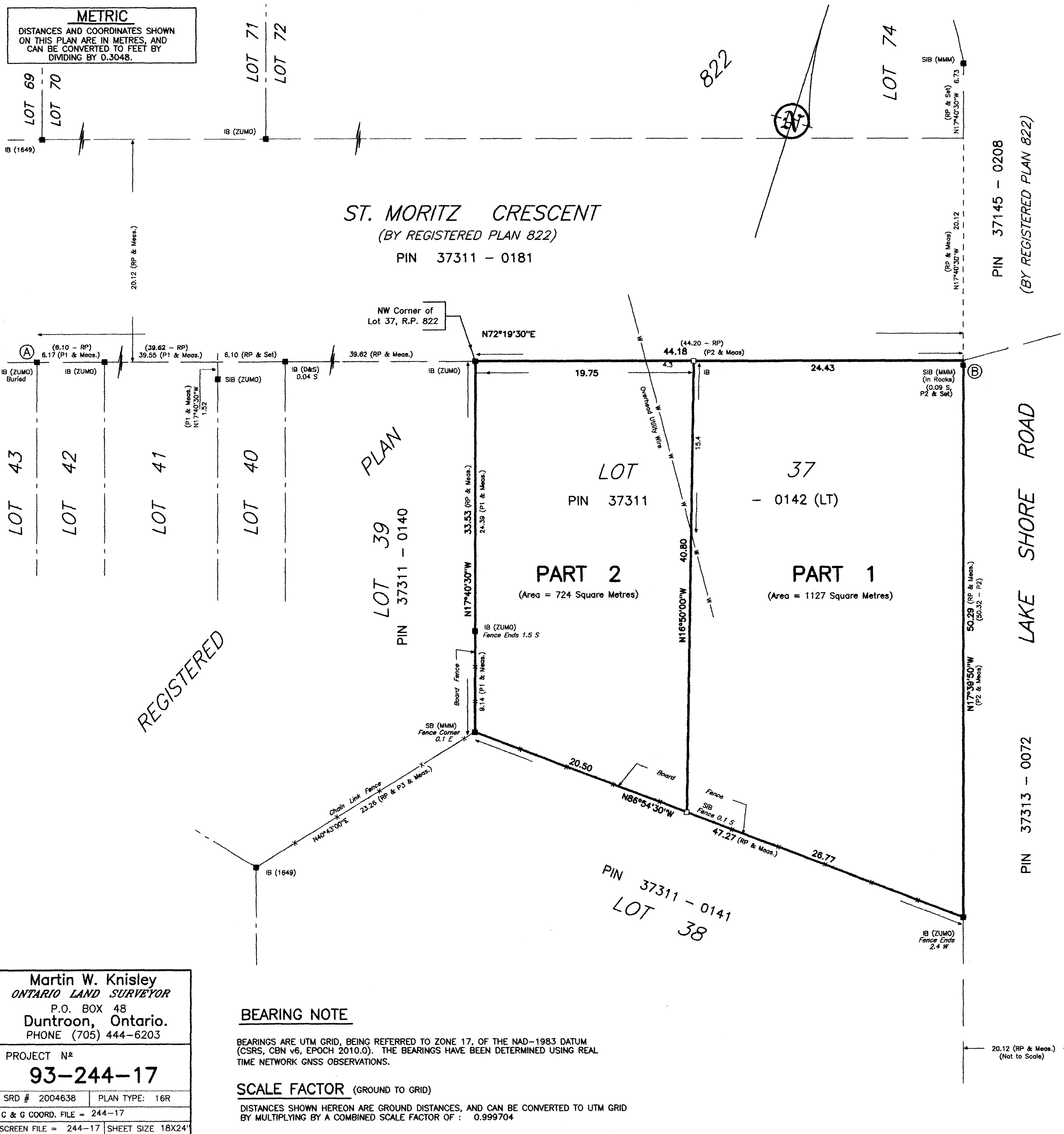
SHEET SIZE 18X24"

BEARING NOTE

BEARINGS ARE UTM GRID, BEING REFERRED TO ZONE 17, OF THE NAD-1983 DATUM (CSRS, CBN v6, EPOCH 2010.0). THE BEARINGS HAVE BEEN DETERMINED USING REAL TIME NETWORK GNSS OBSERVATIONS.

SCALE FACTOR (GROUND TO GRID)

DISTANCES SHOWN HEREON ARE GROUND DISTANCES, AND CAN BE CONVERTED TO UTM GRID BY MULTIPLYING BY A COMBINED SCALE FACTOR OF : 0.999704



I REQUIRE THIS PLAN TO BE DEPOSITED UNDER THE LAND TITLES ACT.

PLAN 16R-10875

RECEIVED AND DEPOSITED

DATE MAY 11th 2017

SIGNATURE

NAME MARTIN KNISLEY (IN PRINT)

DATE May 26 2017

REPRESENTATIVE FOR LAND REGISTRAR FOR THE LAND TITLES DIVISION OF GREY No. 16.

SCHEDULE

PART	LOT	PLAN	P.I.N.
1	ALL OF 37	822	37311-0142(LT)
2			

PARTS 1 AND 2 COMPRISE ALL OF PIN 37311-0142(LT)

PLAN OF SURVEY OF

LOT 37,

REGISTERED PLAN 822,

(GEOGRAPHIC TOWNSHIP OF COLLINGWOOD)

THE TOWN OF THE BLUE MOUNTAINS,

COUNTY OF GREY.

MARTIN W. KNISLEY

Ontario Land Surveyor

2017

5 0 5 10 15

GRAPHIC SCALE - METRES

SCALE = 1:250

LEGEND

1) PIN DENOTES PROPERTY IDENTIFIER NUMBER

2) □ SURVEY MONUMENT SET

3) ■ SURVEY MONUMENT FOUND

4) SIB STANDARD IRON BAR (0.025 SQUARE)

5) IB IRON BAR (0.016 SQUARE)

6) SB SUBDIVISION BAR (0.012 SQUARE)

7) RP REGISTERED PLAN 822

8) P1 PLAN BY M. KNISLEY, (SEPT. 30, 2015; FILE: 93-244-13)

9) P2 PLAN BY ZUBEK, EMO & PATTEN (OCT. 12, 1995; FILE: 68-09-16)

10) P3 PLAN BY M. KNISLEY, (JUNE 27, 2005; FILE: 93-244-9)

11) FOR BEARING COMPARISON PURPOSES A ROTATION OF 1°24'30", COUNTERCLOCKWISE, HAS BEEN APPLIED TO R.P. 822 AND P1, TO CONVERT TO GRID BEARINGS.

11) FOR BEARING COMPARISON PURPOSES A ROTATION OF 0°27'30", COUNTERCLOCKWISE, HAS BEEN APPLIED TO P2, TO CONVERT TO GRID BEARINGS.

INTEGRATION - OBSERVED REFERENCE POINTS

THE COORDINATES OF THE OBSERVED REFERENCE POINTS (ORP's) HAVE BEEN DETERMINED USING REAL TIME NETWORK GNSS OBSERVATIONS AT THE POINTS ILLUSTRATED HEREON.

COORDINATE SYSTEM DATUM = ZONE 17, UTM NAD-1983 ; CSRS (CBN v6, EPOCH 2010.0)

ORP ACCURACIES TO MEET URBAN STANDARDS AS PER SECTION 14(2) OF ONT. REG.216/10

POINT	NORTHING	EASTING	DESCRIPTION
ORP "A"	4930472.39	553271.58	IB
ORP "B"	4930513.46	553400.82	SIB

THE COORDINATES PROVIDED HEREON ARE INTENDED FOR MAPPING PURPOSES, AND CANNOT, IN THEMSELVES, BE USED TO RE-ESTABLISH THE CORNERS OR BOUNDARIES SHOWN ON THIS PLAN.

SURVEYOR'S CERTIFICATE

I CERTIFY THAT:

1) THIS SURVEY AND PLAN ARE CORRECT AND IN ACCORDANCE WITH THE SURVEYS ACT, THE SURVEYORS ACT, THE LAND TITLES ACT AND THE REGULATIONS MADE UNDER THEM.

2) THE SURVEY WAS COMPLETED ON THE 10th DAY OF MAY, 2017.

DATE MAY 11th 2017

MARTIN KNISLEY

ONTARIO LAND SURVEYOR